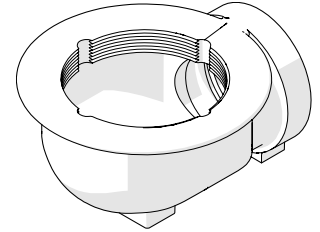




CI Floor Drain Balcony Body Assembly 50PVC/HDPE



PRODUCT CODE:

- 302104P

SPECIFICATIONS

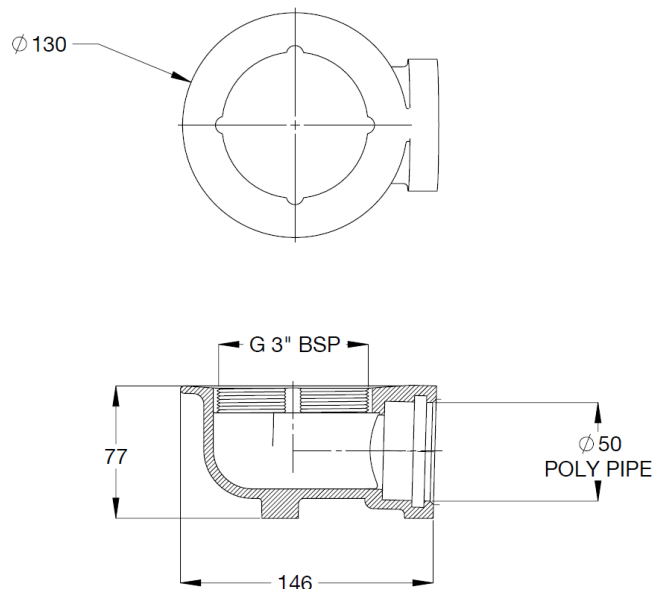
- Slim line design
- Weep holes
- Epoxy coated

TECHNICAL DATA

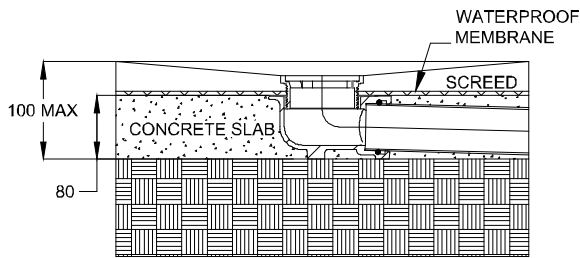
Drain Inlet	3" BSP
Outlet	Ø50mm Pipe
Finish	Black Epoxy Coated

NOTE: Galvin Specialised continually strive to improve their products. Specifications may change without notice.

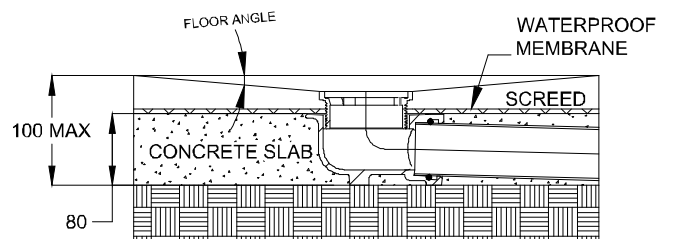
PRE-INSTALLATION - DIMENSIONS



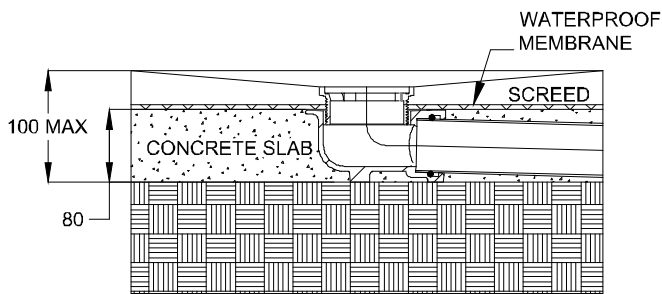
TYPICAL INSTALLATION WITH 303070X (SOLD SEPARATELY)



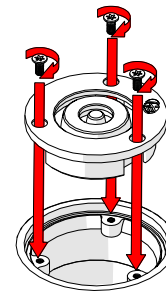
1. Connect the threaded body (not supplied) to the cast iron body and adjust the height to the required FFL.



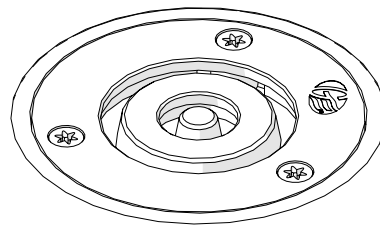
2. Lay screed to falls. Allow for the thickness of tiles or floor covering when setting floor levels.



3. Apply finish flooring.



4. Secure grating as shown (not supplied).



5. Once fully assembled, check if water flows.

TROUBLESHOOTING

PROBLEM	CAUSE	RECTIFICATION
Water is not flowing	<ul style="list-style-type: none"> - Body contains debris or damage - Grate contains debris or damage 	<ul style="list-style-type: none"> - Body must be clean and free from debris. - Grate must be clean and free from debris.



WARRANTY

The warranty set forth herein is given expressly and is the only warranty given by the Galvin Engineering Pty Ltd. With respect to the product, Galvin Engineering Pty Ltd makes no other warranties, express or implied. Galvin Engineering Pty. Ltd. hereby specifically disclaims all other warranties, express or implied, including but not limited to the implied warranties of merchantability and fitness for a particular purpose.

Galvin Engineering Pty Ltd products are covered under our manufacturer's warranty available for download from www.galvinengineering.com.au Galvin Engineering Pty Ltd expressly warrants that the product is free from operational defects in workmanship and materials for the warranty period as shown on the schedule in the manufacturer's warranty. During the warranty period, Galvin Engineering will replace or repair any defective products manufactured by Galvin Engineering without charge, so long as the terms of the Manufacturer's warranty are complied with.

The remedy described in the first paragraph of this warranty shall constitute the sole and exclusive remedy for breach of warranty, and Galvin Engineering Pty Ltd shall not be responsible for any incidental, special or consequential damages, including without limitation, lost profits or the cost of repairing or replacing other property which is damaged if this product does not work properly, other costs resulting from labour charges, delays, vandalism, negligence, fouling caused by foreign material, damage from adverse water conditions, chemical, electrical or any other circumstances over which Galvin Engineering has no control. This warranty shall be invalidated by any abuse, misuse, misapplication, improper installation or improper maintenance or alteration of the product.

